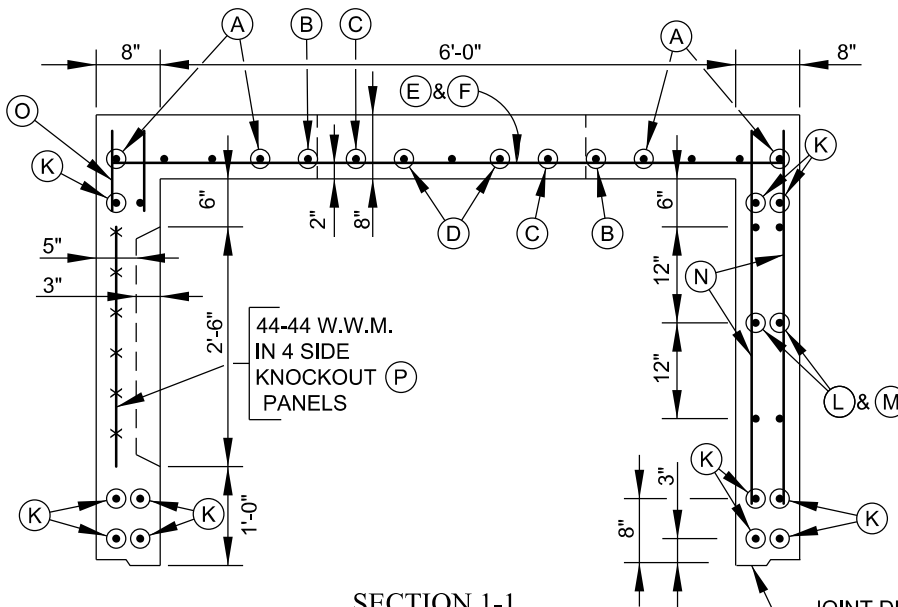
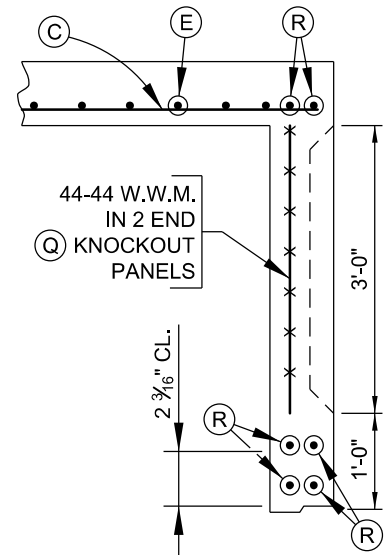


PLAN - TOP HALF



SECTION 1-1



SECTION 2-2

JOINT DETAIL
SEE BC 826.08

BOTTOM HALF (6' x 12' x 8' MANHOLE) SEE BC 826.02-2
BAR SCHEDULE (6' x 12' x 8' MANHOLE) SEE BC 826.04
KNOCKOUT DETAILS SEE BC 826.05
INSERTS FOR RECESSED EXTENSION SEE BC 826.06
ACCESSORIES FOR PRECAST MANHOLES SEE BC 826.08
STANDARD ACCESS STACK SEE BC 825.11
PRECAST RECESSED EXTENSION SEE BC 826.07-1

GENERAL NOTES

SPECIFICATIONS ----- LATEST DEPARTMENT OF GENERAL SERVICES
CONCRETE ----- $f'_c = 5000$ PSI - MIX AS APPROVED BY ENGR.
REINFORCING ----- ASTM A615, GRADE 60
WELDED WIRE MESH --- ASTM A185
LOADING ----- HS 25 TRUCK LOADING



APPROVED:

Ola Olamide

CHIEF, CONDUIT DIVISION

Husein Raiza
DIRECTOR, DEPARTMENT OF TRANSPORTATION

CITY OF BALTIMORE
DEPARTMENT OF TRANSPORTATION
CONDUIT DIVISION

PRECAST LINE MANHOLE
6' X 12' X 8' HEADROOM
TOP HALF

ISSUED	REVISED	REVISED
08/2024		
STANDARD NO. BC 826-02-1		
SCALE: NONE	SHEET 1 OF 2	